

Uputstvo za kreiranje email naloga

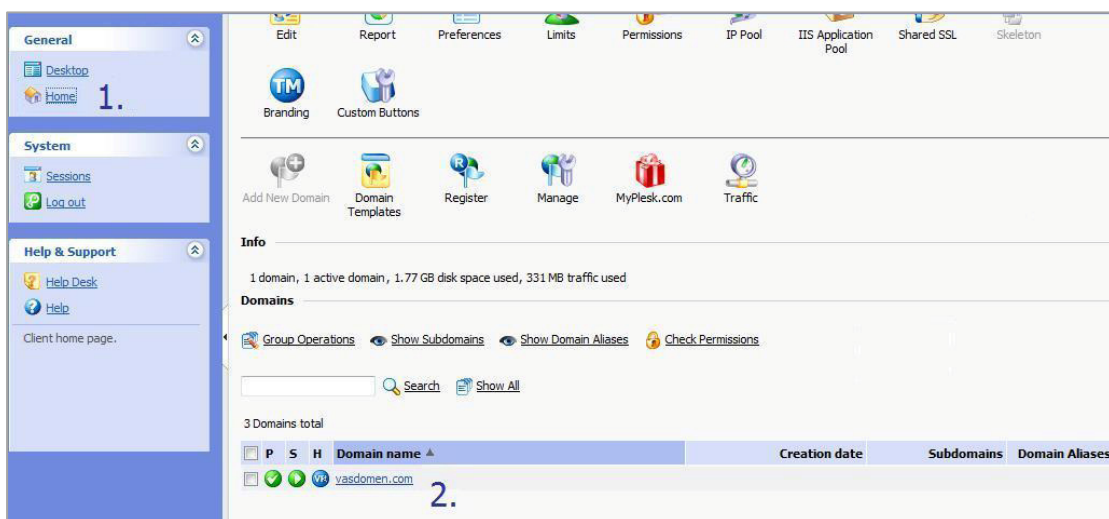
Plesk

Logovanje na PLESK

1. Da bi se ulogovali na Plesk otvorite Vaš browser i ukucajte URL <https://vasdomen.com>, gde je vasdomen.com ime Vašeg domena.
2. Pritisnite **ENTER** i u login prozoru kucajte korisničko ime i lozinku koju ste dobili za Plesk panel i kliknite **Login**.

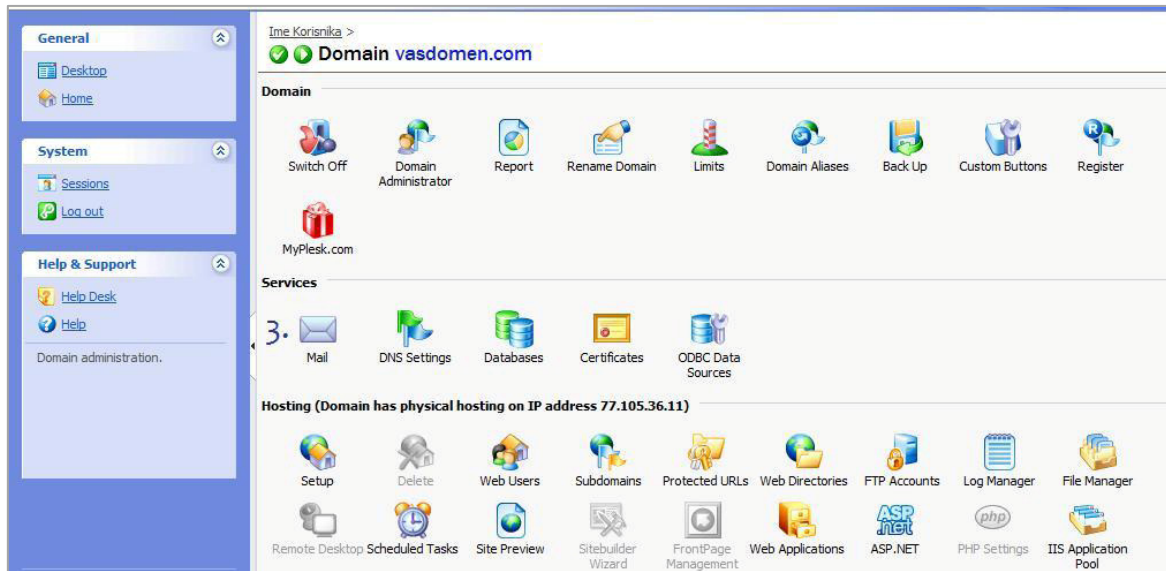
Kreiranje domenskih e-mail naloga:

1. Nakon što ste se ulogovali na Plesk, na levoj strani monitora kliknite na **Home**
2. Skrolujte na samo dno stranice i kliknite na vasdomen.com (gde je vasdomen.com ime Vašeg registrovanog domena)

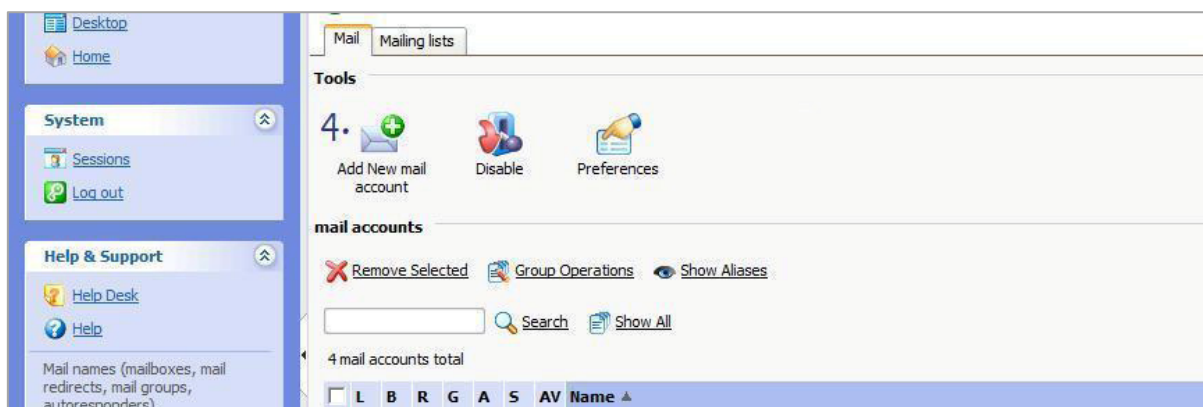


1 | www.oriontelekom.rs tel: 011 4 100 100, email: hosting@oriontelekom.rs

3. Pod **Services** pronađite i kliknite na **Mail** ikonu



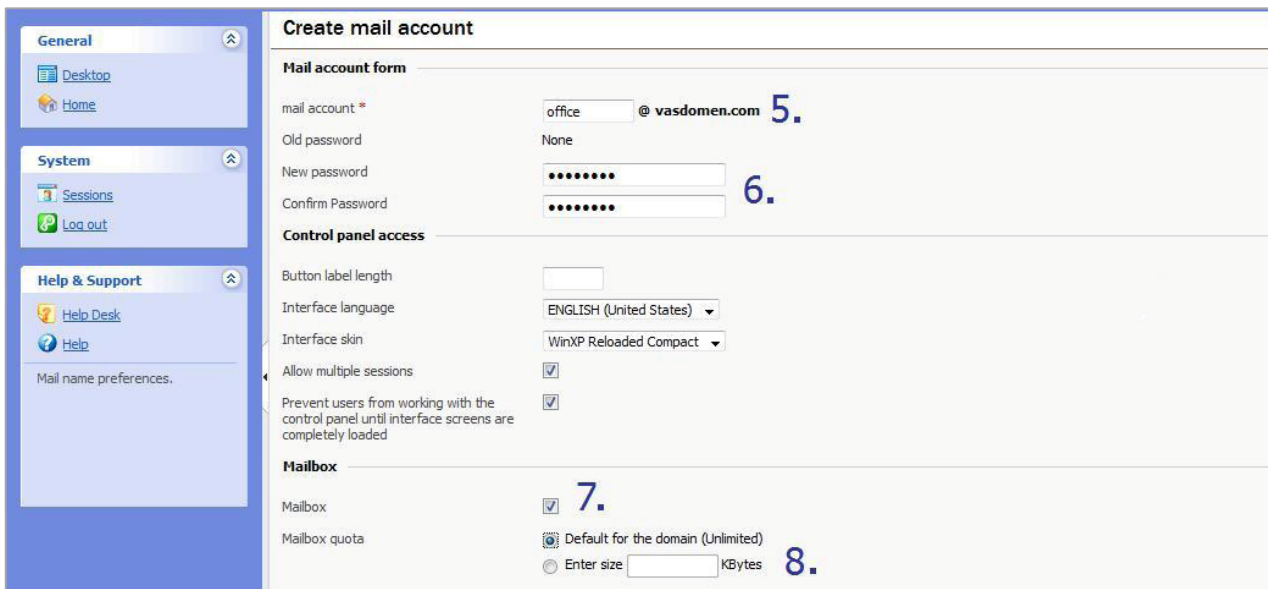
4. U grupi **Tools** kliknite na ikoncu **Add New mail account**



2 | www.oriontelekom.rs tel: 011 4 100 100, email: hosting@oriontelekom.rs



5. U delu **Mail account** upišite željeno korisničko ime pre znaka @ (u našem primeru je to **office**)
6. U **New password** i **Confirm password** upišite željenu lozinku
7. Proverite da li je uključen **Mailbox** check box.
8. Po potrebi možete definisati veličinu Mailbox-a pod **Mailbox quota** - odaberite **Enter size** i unesite željenu vrednost u kilobajtima.



The screenshot shows the 'Create mail account' interface. On the left is a navigation sidebar with 'General', 'System', and 'Help & Support' sections. The main content area is titled 'Create mail account' and contains several sections:

- Mail account form:** Includes fields for 'mail account *' (containing 'office' and '@ vasdomen.com' with annotation 5), 'Old password' (set to 'None'), 'New password' (masked with dots and annotation 6), and 'Confirm Password' (masked with dots).
- Control panel access:** Includes 'Button label length' (empty), 'Interface language' (dropdown set to 'ENGLISH (United States)'), 'Interface skin' (dropdown set to 'WinXP Reloaded Compact'), 'Allow multiple sessions' (checked), and 'Prevent users from working with the control panel until interface screens are completely loaded' (checked).
- Mailbox:** Includes 'Mailbox' (checked with annotation 7) and 'Mailbox quota' (radio buttons for 'Default for the domain (Unlimited)' and 'Enter size' (with a text input field and 'KBytes' label, annotated with 8)).

9. Kliknite **OK** Ponovite postupak za svaki e-mail nalog koji želite da kreirate.

3 | www.oriontelekom.rs tel: 011 4 100 100, email: hosting@oriontelekom.rs



Tehnička podrška

Telefon

Tehnička podrška Orion telekom Hostinga Vam stoji na raspolaganju svakog radnog dana od 8 do 18 časova putem telefona 011 4 100 100.

Email

Za tehničku podršku putem emaila, molimo Vas da nam se obratite na email adresu hosting@oriontelekom.rs.

